

## Series 840 - inch

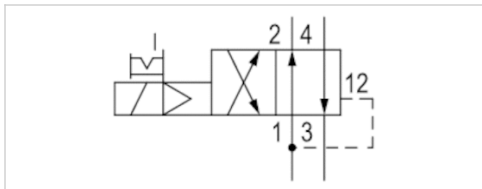


AVENTICS™ Series 840 - inch







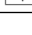
# Series 840 - inch

- 4/2
- $Q_n = 200$  l/min
- Pilot valve width : 22.5 mm
- Pipe connection
- Compressed air connection output : 1/4" NPTF
- Electrical connection : Plug, EN 175301-803, form C
- Manual override : with detent
- single solenoid double solenoid
- With air spring return
- Pilot : Internal



Version	Diaphragm poppet valve
Activation	Electrically
Pilot	Internal
Sealing principle	Soft sealing
Working pressure min./max.	See table below
Control pressure min./max.	See table below
Ambient temperature min./max.	-15 ... 50 °C
Medium temperature min./max.	-15 ... 50 °C
Medium	Compressed air
Max. particle size	50 µm
Oil content of compressed air	0 ... 1 mg/m <sup>3</sup>
Nominal flow $Q_n$	200 l/min
Connector standard	EN 175301-803, form C
Protection class with connection	IP65
Reverse polarity protection	Protected against polarity reversal
Duty cycle	100 %
Mounting on manifold strip	PRS strip
Weight	See table below

## Technical data

Part No.	MO	Compressed air connection	
		Input	Output
R432008661		1/4" NPTF	1/4" NPTF
R432008662		1/4" NPTF	1/4" NPTF
R432008663		1/4" NPTF	1/4" NPTF
5728409980		1/4" NPTF	1/4" NPTF
5728409990		1/4" NPTF	1/4" NPTF

Part No.	Compressed air connection	
	Exhaust	Pilot Exhaust
R432008661	1/4" NPTF	Ø 4,5
R432008662	1/4" NPTF	Ø 4,5
R432008663	1/4" NPTF	Ø 4,5
5728409980	1/4" NPTF	Ø 4,5
5728409990	1/4" NPTF	Ø 4,5

Part No.	Operational voltage		Operational voltage	
	DC	AC 50 Hz	AC 60 Hz	AC 60 Hz
R432008661	-	-	-	-
R432008662	12 V	-	-	-
R432008663	-	-	-	-
5728409980	24 V	-	-	-
5728409990	-	110 V	-	110 V

Part No.	Voltage tolerance		Power consumption		Holding power	
	DC	AC 60 Hz	DC	AC 50 Hz	DC	AC 50 Hz
R432008661	-10% / +15%	-	-	-	-	2.5 VA
R432008662	-10% / +10%	-	1.6 W	-	-	-
R432008663	-10% / +15%	-	-	-	-	2.2 VA
5728409980	-10% / +10%	-	1.6 W	-	-	-
5728409990	-	-10% / +15%	-	-	-	3 VA

Part No.	Holding power		Switch-on power		Working pressure min./max.
	AC 60 Hz	AC 50 Hz	AC 50 Hz	AC 60 Hz	
R432008661	2.2 VA	3.5 VA	3 VA	3 VA	1.5 ... 10 bar
R432008662	-	-	-	-	1.8 ... 10 bar
R432008663	1.9 VA	3 VA	3 VA	3.6 VA	1.5 ... 10 bar
5728409980	-	-	-	-	1.5 ... 10 bar
5728409990	2.4 VA	4.2 VA	3.4 VA	3.4 VA	1.5 ... 10 bar

Part No.	Control pressure min./max.	Typ. switch-on time	Typ. switch-off time	Weight
R432008661	1.5 ... 10 bar	12 ms	12 ms	0.156 kg
R432008662	1.8 ... 10 bar	12 ms	12 ms	0.156 kg
R432008663	1.5 ... 10 bar	12 ms	12 ms	0.156 kg
5728409980	1.5 ... 10 bar	17 ms	19 ms	0.104 kg
5728409990	1.5 ... 10 bar	17 ms	19 ms	0.104 kg

Nominal flow Qn at 6 bar and Δp = 1 bar, MO = Manual override

## Technical information

The min. control pressure must be adhered to, since otherwise faulty switching and valve failure may result!  
 The pressure dew point must be at least 15 °C under ambient and medium temperature and may not exceed 3 °C .  
 The oil content of compressed air must remain constant during the life cycle.  
 Use only the approved oils from AVENTICS. Further information can be found in the “Technical information” document (available in the MediaCentre).

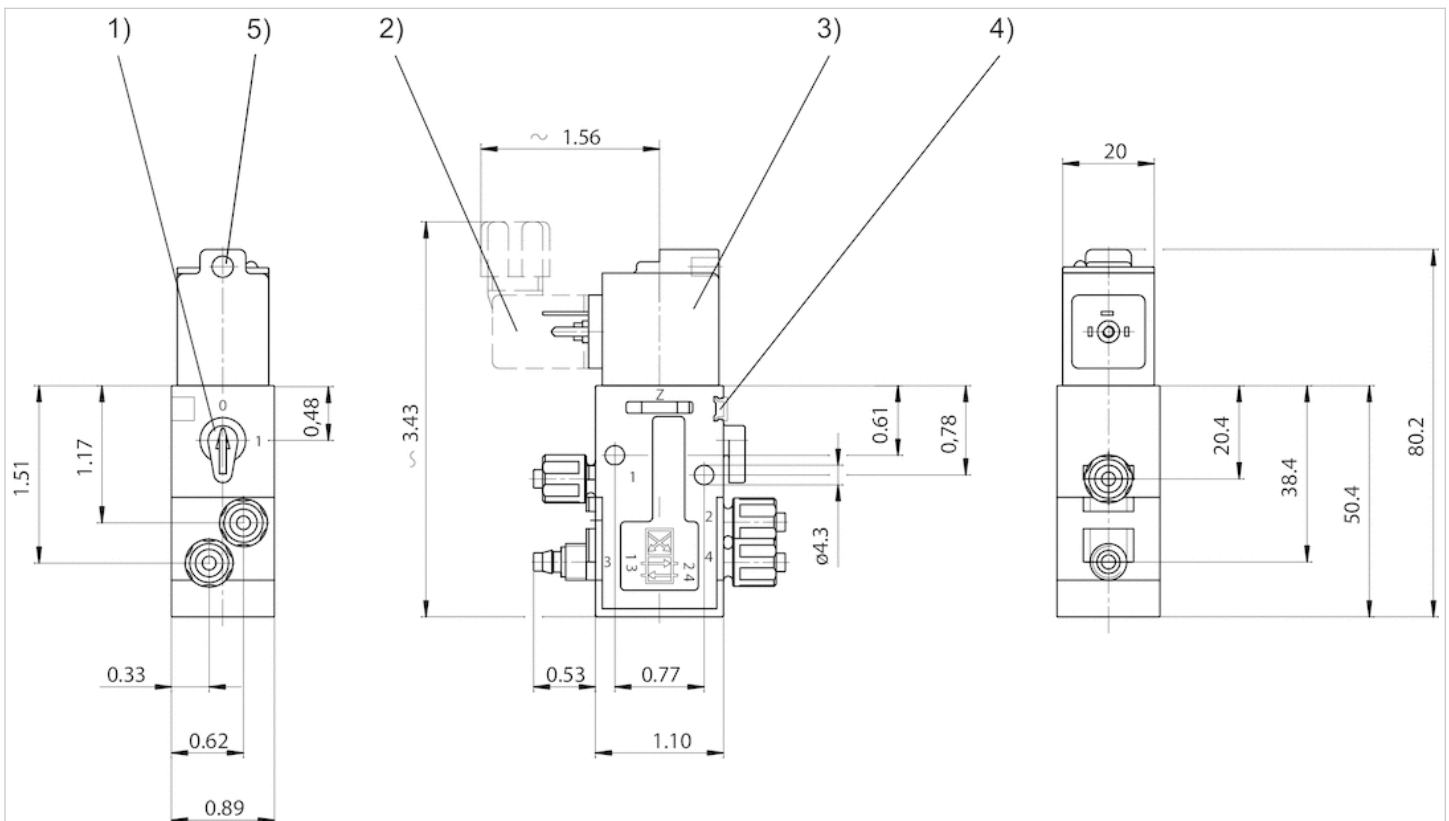
Versions with voltage of less than 50 V DC do not have a protective ground.  
 The maximum operating pressure depends on the ambient temperature. The following values are applicable -15 °C ... 50 °C =  
 Operating pressure 1.5 bar ... 8 bar possible  
 -15 °C ... 40 °C = Operating pressure 1.5 bar ... 10 bar possible.

## Technical information

Material	
Housing	Polyoxymethylene
Seals	Acrylonitrile butadiene rubber

## Dimensions

### Dimensions in inches

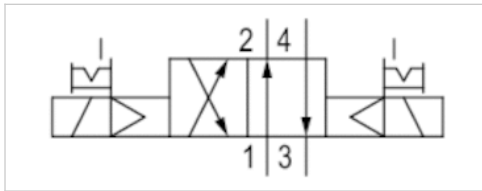


- 1) Manual override
- 2) Valve plug connector
- 3) Coil can be rotated at 180° intervals
- 4) Mounting space for name plate 5) Hole for M5 fitting or silencer Ø 4.5 mm






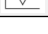
## 4/2-directional valve, Series 840

- Qn = 200 l/min
- Pilot valve width : 22.5 mm
- Pipe connection
- Compressed air connection output : Ø 6x1
- Electrical connection : Plug, EN 175301-803, form C
- Manual override : with detent
- double solenoid
- Pilot : Internal



Version	Diaphragm poppet valve
Activation	Electrically
Pilot	Internal
Sealing principle	Soft sealing
Working pressure min./max.	1.8 ... 10 bar
Note	The maximum operating pressure depends on the ambient temperature. The following values are applicable: -15 °C ... 50 °C: Operating pressure 1.8 bar ... 8 bar possible. -15 °C ... 40 °C: Operating pressure 1.8 bar ... 10 bar possible.
Control pressure min./max.	1.8 ... 10 bar
Ambient temperature min./max.	-15 ... 50 °C
Medium temperature min./max.	-15 ... 50 °C
Medium	Compressed air
Max. particle size	50 µm
Oil content of compressed air	0 ... 1 mg/m <sup>3</sup>
Nominal flow Qn	200 l/min
Connector standard	EN 175301-803, form C
Protection class with connection	IP65
Reverse polarity protection	Protected against polarity reversal
Duty cycle	100 %
Typ. switch-on time	12 ms
Typ. switch-off time	12 ms
Mounting on manifold strip	PRS strip
Weight	See table below

## Technical data

Part No.	MO	Compressed air connection	
		Input	Output
R432008664		Ø 6x1	Ø 6x1
R432008665		Ø 6x1	Ø 6x1
R432008666		Ø 6x1	Ø 6x1
R432030358		Ø 6x1	Ø 6x1

Part No.	Compressed air connection	
	Exhaust	Pilot Exhaust
R432008664	Ø 6x1	Ø 4,5
R432008665	Ø 6x1	Ø 4,5
R432008666	Ø 6x1	Ø 4,5
R432030358	Ø 6x1	Ø 4,5

Part No.	Operational voltage		Operational voltage
	DC	AC 50 Hz	AC 60 Hz
R432008664	-	110 V	110 V
R432008665	-	-	-
R432008666	24 V	-	-
R432030358	-	-	-

Part No.	Voltage tolerance	Voltage tolerance	Power consumption	Holding power
	DC	AC 60 Hz	DC	AC 50 Hz
R432008664	-	-10% / +15%	-	2.2 VA
R432008665	-	-	-	-
R432008666	-10% / +10%	-	1.6 W	-
R432030358	-	-	-	-

Part No.	Holding power	Switch-on power	Switch-on power	Weight
	AC 60 Hz	AC 50 Hz	AC 60 Hz	
R432008664	1.9 VA	3.1 VA	2.6 VA	0.157 kg
R432008665	-	-	-	-
R432008666	-	-	-	0.157 kg
R432030358	-	-	-	-

Nominal flow  $Q_n$  at 6 bar and  $\Delta p = 1$  bar, MO = Manual override

## Technical information

The min. control pressure must be adhered to, since otherwise faulty switching and valve failure may result!

The pressure dew point must be at least 15 °C under ambient and medium temperature and may not exceed 3 °C .

The oil content of compressed air must remain constant during the life cycle.

Use only the approved oils from AVENTICS. Further information can be found in the "Technical information" document (available in the MediaCentre).

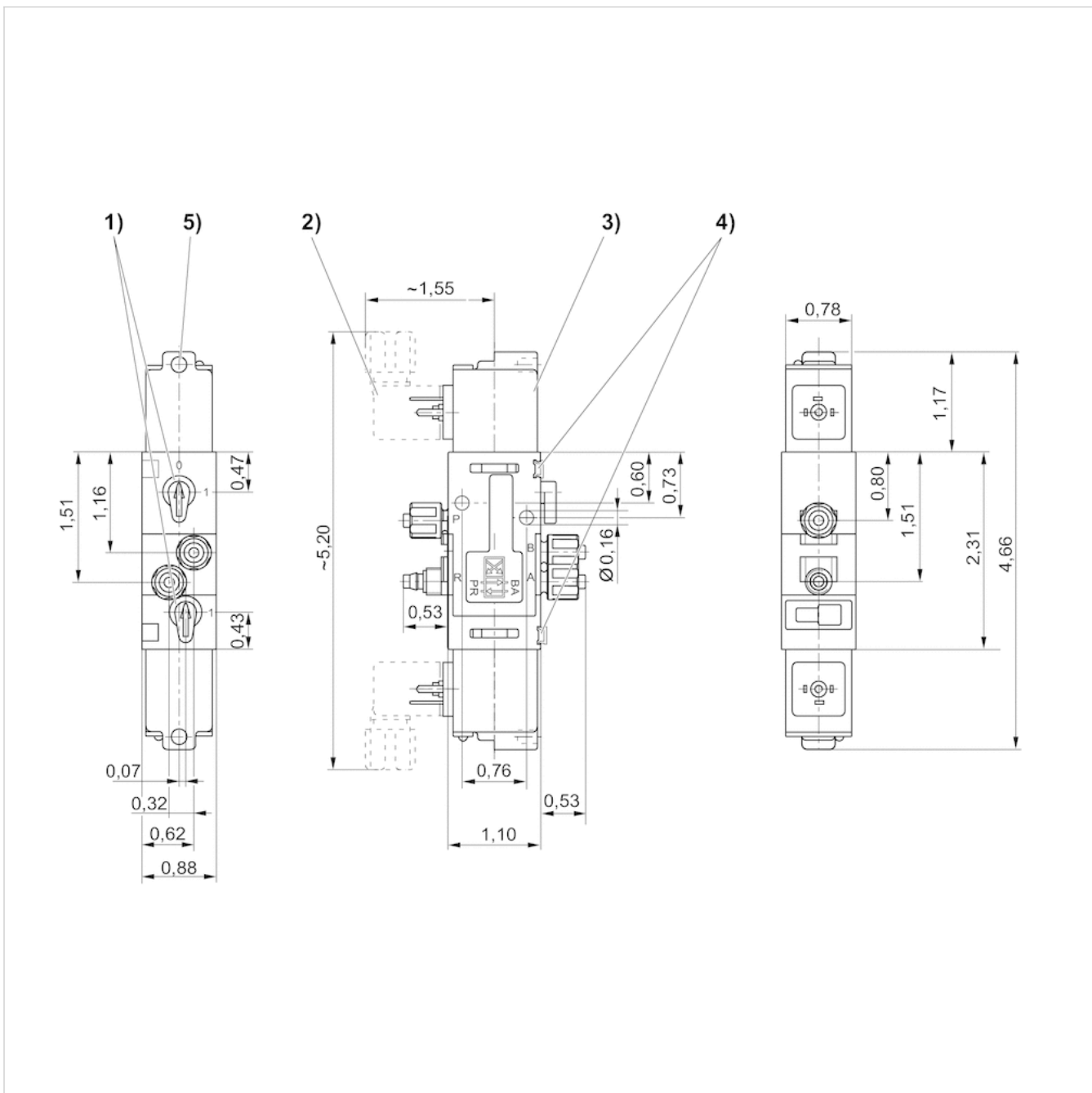
Versions with voltage of less than 50 V DC do not have a protective ground.

## Technical information

Material	
Housing	Polyoxymethylene
Seals	Acrylonitrile butadiene rubber

## Dimensions

### Dimensions in inches



1) Manual override 2) Valve plug connector 3) LED display 4) Coil can be rotated at 180° intervals 5) Mounting space for name plate 6) Hole for M5 fitting or silencer Ø 4.5 mm



# Valve plug connector, series CON-VP

- Socket, form C, 2+E, angled, 90°
- ISO 15217
- unshielded
- with LED Green



Connection type	Screws
Ambient temperature min./max.	-40 ... 90 °C
Operational voltage	See table below
Protection class	IP65
Mounting screw tightening torque	0.4 Nm
Weight	See table below

## Technical data

Part No.		Operational voltage	Max. current	Protective circuit	Contact assignment
1834484187		250 / 300 V AC/DC	6 A	-	2+E
8941012202		250 / 300 V AC/DC	6 A	-	2+E
4402050330		24 V AC/DC	-	Z-diode	2+E

Part No.	LED status display	suitable cable-Ø min./max	Seal	Weight
1834484187	-	4 / 8 mm	caoutchouc/butadiene caoutchouc	0.012 kg
8941012202	-	4 / 8 mm	-	0.012 kg
4402050330	Green	-	-	0.014 kg

Part No.	Fig.	
1834484187	Fig. 1	-
8941012202	Fig. 2	-
4402050330	Fig. 3	1)

1)

## Technical information

The specified protection class is only valid in assembled and tested state.

## Technical information

Material

Seals

caoutchouc/butadiene caoutchouc

## Dimensions

Fig. 1

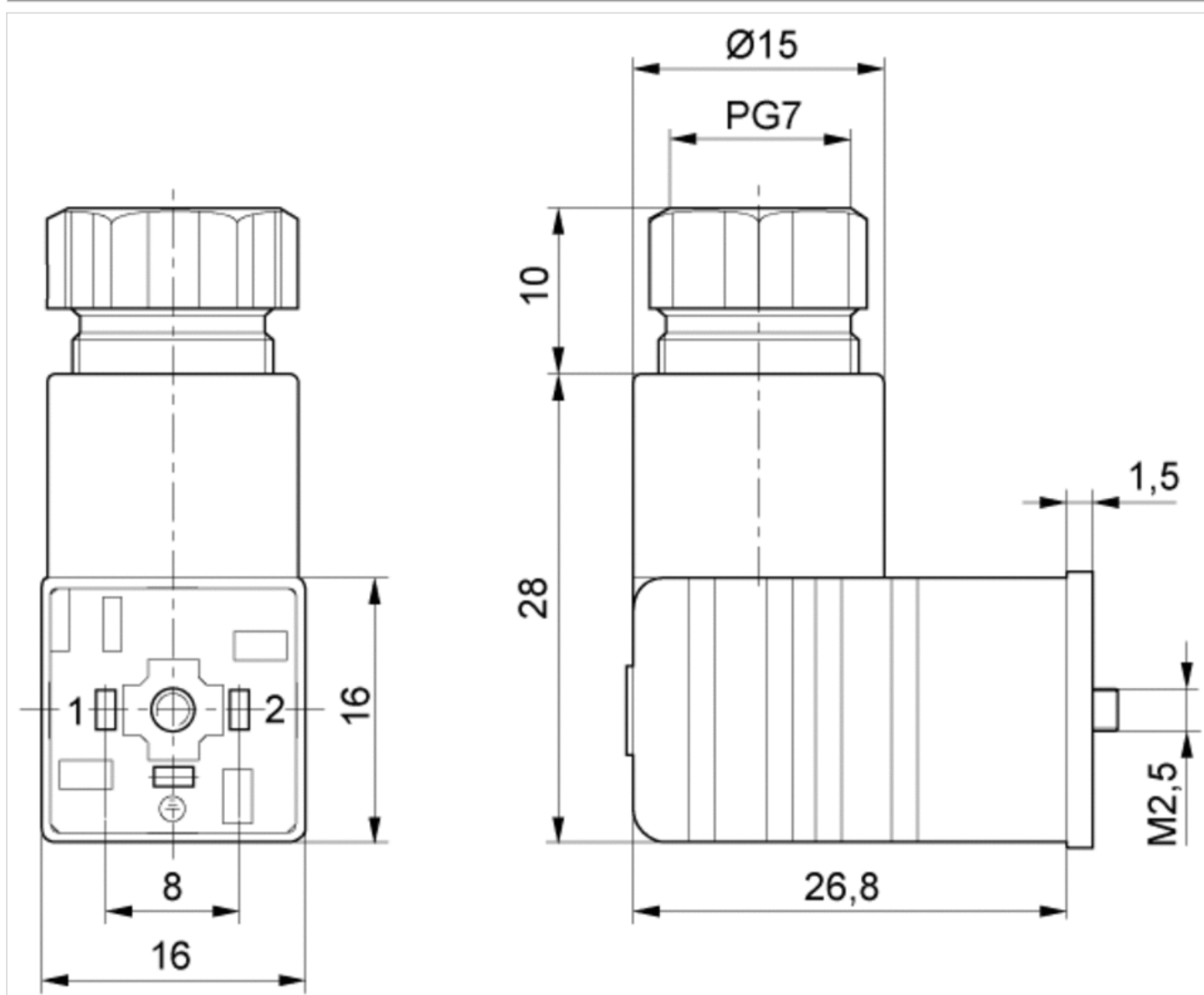


Fig. 2

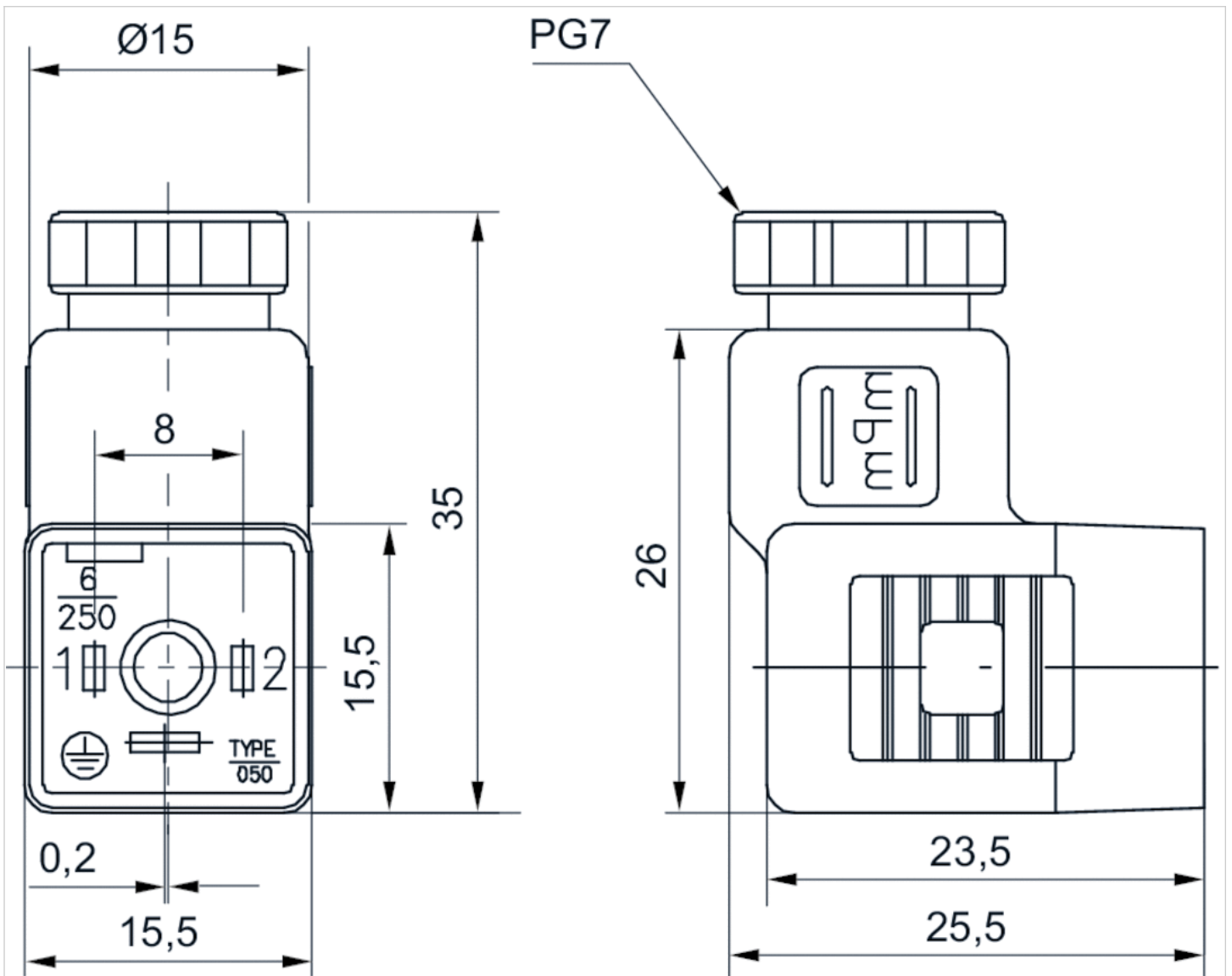
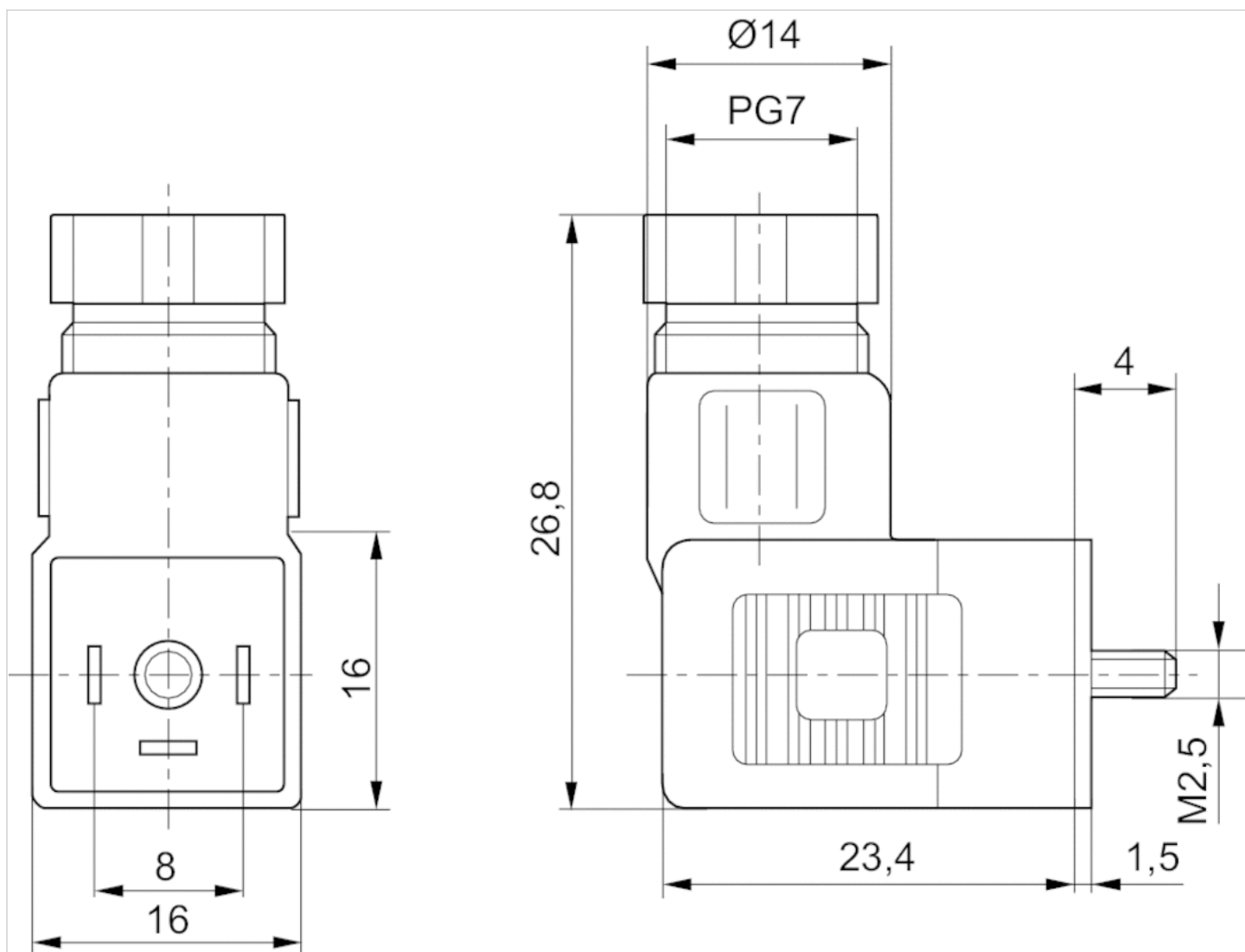


Fig. 3



# Efficient pneumatic solutions, our program: cylinders and drives, valves and valve systems, air supply management



Visit us: [Emerson.com/Aventics](https://www.emerson.com/Aventics)

Your local contact: [Emerson.com/contactus](https://www.emerson.com/contactus)



Emerson.com



[Facebook.com/EmersonAutomationSolutions](https://www.facebook.com/EmersonAutomationSolutions)



[LinkedIn.com/company/Emerson-Automation-Solutions](https://www.linkedin.com/company/Emerson-Automation-Solutions)



[Twitter.com/EMR\\_Automation](https://twitter.com/EMR_Automation)

An example configuration is depicted on the title page. The delivered product may thus vary from that in the illustration. Subject to change. This Document, as well as the data, specifications and other information set forth in it, are the exclusive property of AVENTICS GmbH. It may not be reproduced or given to third parties without its consent. Only use the AVENTICS products shown in industrial applications. Read the product documentation completely and carefully before using the product. Observe the applicable regulations and laws of the respective country. When integrating the product into applications, note the system manufacturer's specifications for safe use of the product. The data specified only serve to describe the product. No statements concerning a certain condition or suitability for a certain application can be derived from our information. The information given does not release the user from the obligation of own judgment and verification. It must be remembered that the products are subject to a natural process of wear and aging.

The Emerson logo is a trademark and service mark of Emerson Electric Co. Brand logotype are registered trademarks of one of the Emerson family of companies. All other marks are the property of their respective owners. © 2017 Emerson Electric Co. All rights reserved.  
2019-03



## CONSIDER IT SOLVED™